

TIFFIN

2024

CLASS-A

ALLEGRO RED



What's New Summary - Allegro RED

WHAT'S NEW

- Renamed from Allegro RED 360 to Allegro RED
- Cummins® L9 380 HP Diesel Engine
- Solstice Fabric Suite
- Alpaca and Landscape Upholstery Fabrics
- White Linen, Sandstone, and Platinum Cabinetry
- Electric Front Overhead Drop-Down Bunk Option
- Updated Ceiling Treatments
- White Ceiling Panels
- Tablet Holders in Bunk Bed

Premium Paint



Our eight-step, full-body paint system features premium grade paints sealed with three layers of clear coat with ultraviolet protection. An additional layer of high-performance film protects the front of the coach and select areas.

GENERATION 4



G4 NASA



G4 EURO BLUE



G4 FIRE OPAL



G4 RUSTIC CANYON



G4 FROSTED GRANITE

GENERATION 5



G5 NASA



G5 EURO BLUE



G5 FIRE OPAL



G5 RUSTIC CANYON

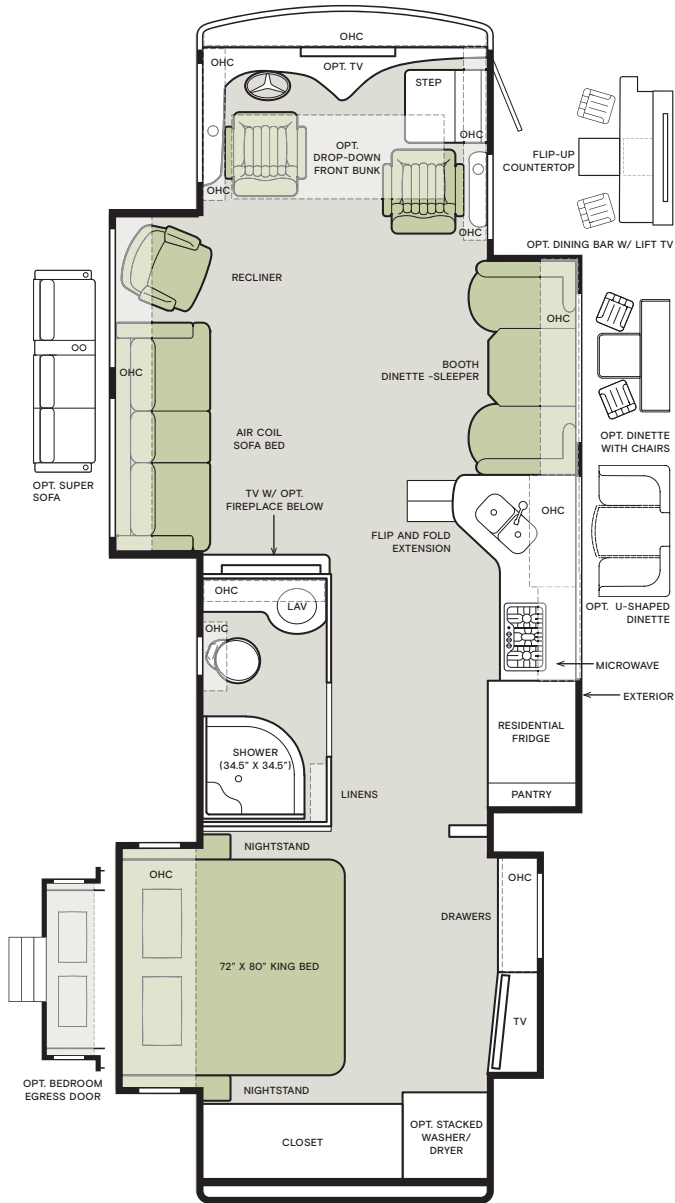


G5 FROSTED GRANITE

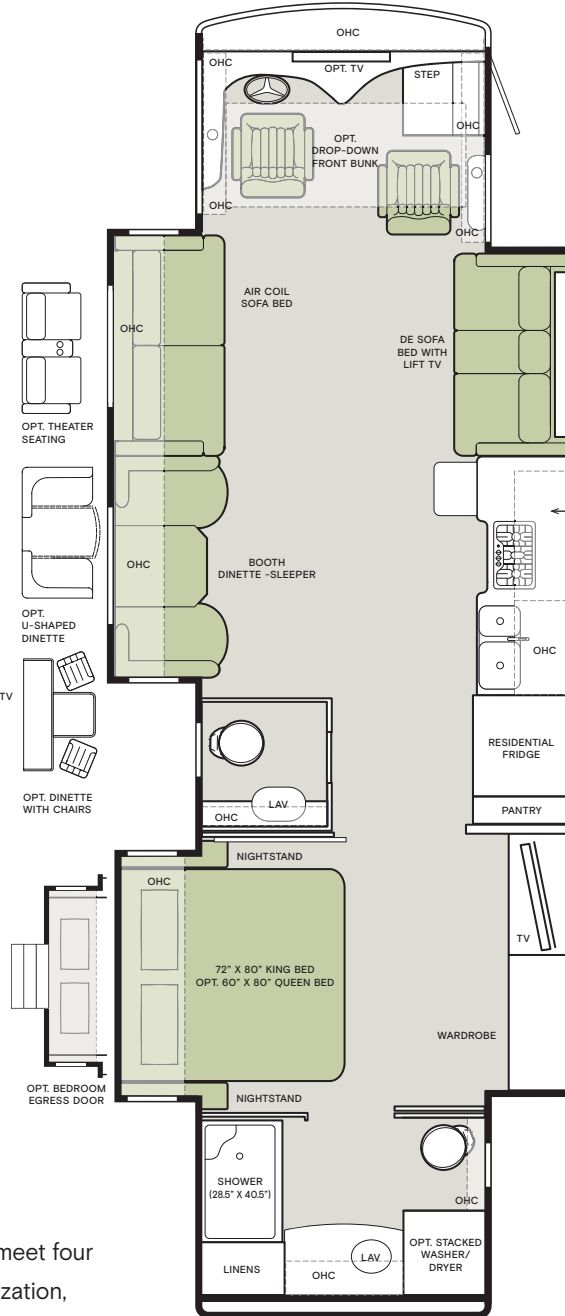
Images shown are representations of paint layouts only and do not reflect all exterior features or options. Colors shown may slightly differ from colors on actual product.

Floor Plans

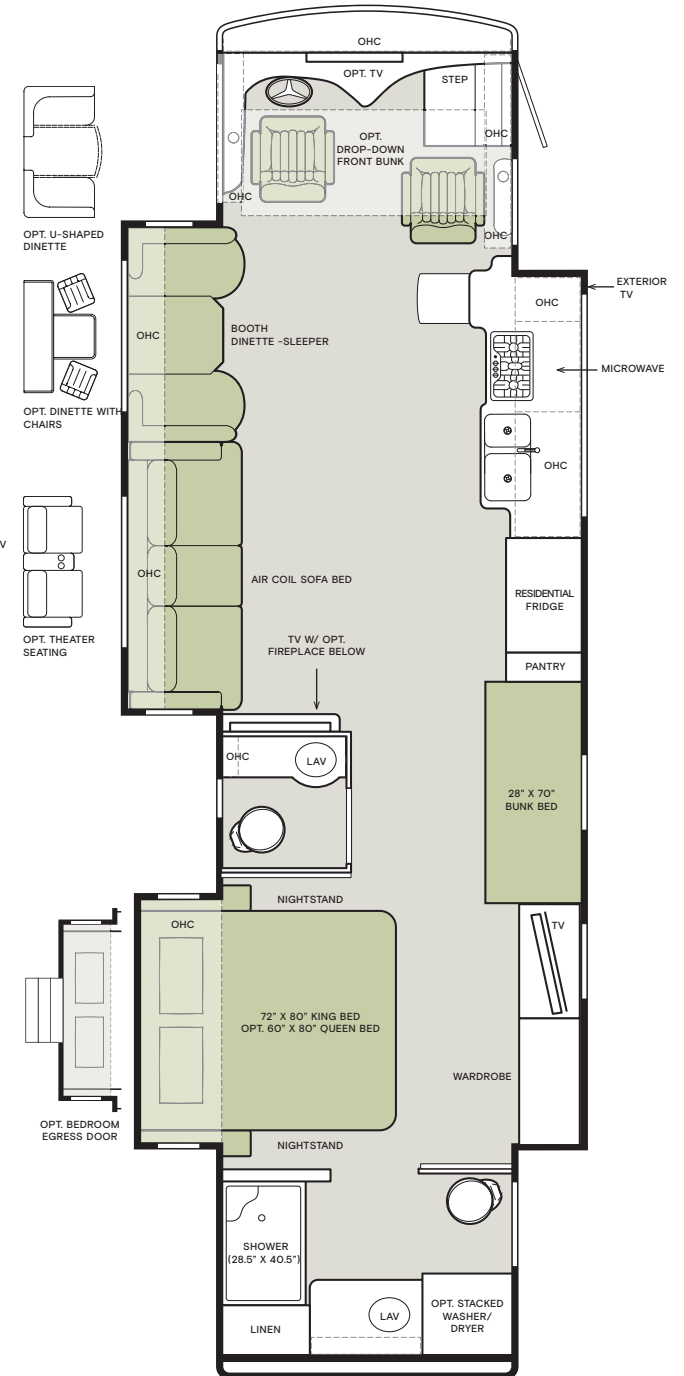
33 AA



37 BA



38 KA




The design of every Allegro RED floor plan must meet four essential criteria: Maximum space, Optimal organization, Relaxation plus, and Elegant atmosphere. Tiffin's MORE Plans offer your family the most comfortable layout for life on the road.

If optional furniture combinations are selected, window locations may vary from diagram shown. All options may not be available in every model. Because of progressive improvements and specifications, standard and optional equipment are subject to change without notice or obligation. For a complete and up-to-date list of available options and specifications, visit tiffinmotorhomes.com.

Interior Décor

Make your experience on the road all your own. Express yourself by choosing from interior selections such as cabinet finishes and décor options for every part of your motorhome. In the 2024 Red, you'll be able to travel in style no matter where you go.



**MR. BOB TIFFIN
RECOMMENDS**

**SOLSTICE
DÉCOR PACKAGE
WITH SHADOW
CABINETS.**

FLOORING

NEW



MARBLE OBSESS GLAZED
Porcelain Tile

CABINETS

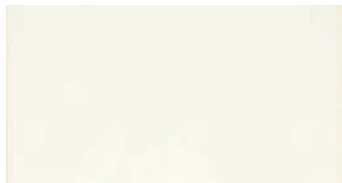


SHADOW



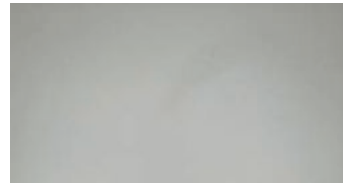
SANDSTONE

NEW



WHITE LINEN

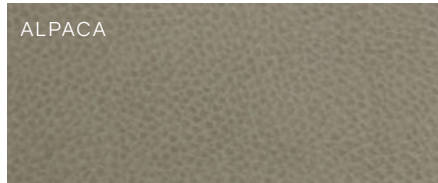
NEW



PLATINUM

NEW

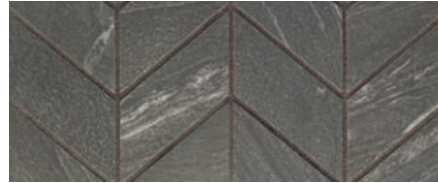
STONE CREEK



FURNITURE



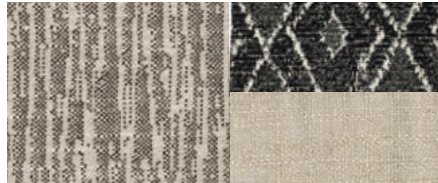
WINDOW TREATMENT



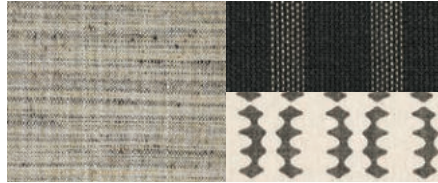
BACKSPLASH



COUNTERTOP



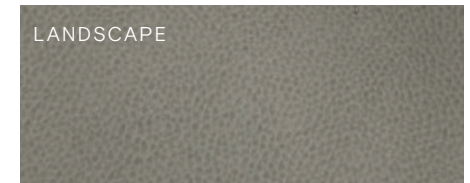
LIVING ROOM



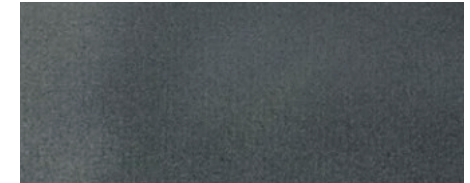
MASTER SUITE

SOLSTICE

NEW



FURNITURE



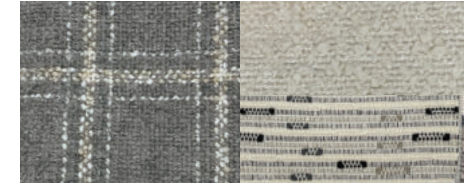
WINDOW TREATMENT



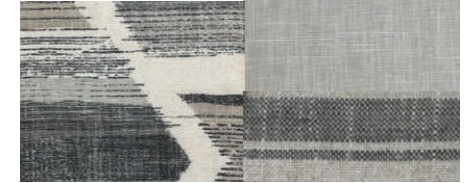
BACKSPLASH



COUNTERTOP



LIVING ROOM



MASTER SUITE

Images shown are representations of paint layouts only and do not reflect all exterior features or options. Colors shown may slightly differ from colors on actual product. Colors of interior decor options shown may vary from colors on actual product.

Specifications, Features, and Options

KEY : S : Standard Feature | O : Optional Feature; Additional costs may apply | D : Dependent; Availability is dependent on selection of another option | - : Not Available

WEIGHTS AND MEASURES	33 AA	37 BA	38 KA
DIMENSIONS			
Overall Length (approx.) ¹	35' 2"	38' 6"	39' 6"
Wheel Base	198"	234"	252"
Overall Width ¹	101"	101"	101"
Overall Height	12' 10"	12' 10"	12' 10"
Minimum Garage Height	14'	14'	14'
Interior Height	84"	84"	84"
Interior Width	96"	96"	96"
Square Footage (approx.) ²	335	375	390
Basement Storage (cubic feet, approx.)	84	119	119
WEIGHT LIMITS			
GAWR-Front (pounds)	14,320	14,320	14,320
GAWR-Rear (pounds)	23,000	23,000	23,000
GVWR (pounds)	37,320	37,320	37,320
Maximum Trailer Weight (pounds) ³	10,000	10,000	10,000
Hitch Rating (pounds)	10,000	10,000	10,000
GCWR (pounds)	47,320	47,320	47,320
CAPACITIES			
Fuel Tank (gallons)	100	100	100
DEF Tank (gallons) ⁴	13	13	13
Fresh Water (gallons)	90	90	90
Grey Water (gallons)	70	70	70
Black Water (gallons)	50	50	50
LPG Tank (gallons) ⁵	36	36	36
QUANTITIES			
Number of Slideouts	4	3	3
Sleeping Capacity ⁶	4 to 6	2 to 6	4 to 8
Sleeping Areas ⁶	2 to 4	1 to 5	3 to 6
Seat Belts ⁶	5 to 7	4 to 9	4 to 7
Seating Capacity ⁶	7 to 10	7 to 11	6 to 9

¹ The approximated coach width and length does not include side-view mirrors and rear ladders.

² Square footage was calculated with the slide-outs fully extended.

³ Maximum trailer weight is dependent on the loading and towing variables which include the GVWR, GAWR, and GCWR, as well as adequate trailer brakes.

⁴ Diesel Exhaust Fluid (DEF) is the active component used in Selective Catalytic Reduction (SCR) engines to reduce nitrogen oxide emissions by 90% to meet EPA standards.

⁵ LPG tank can only be filled to 80% capacity.

⁶ Dependent on furniture and dinette options.

CHASSIS AND DRIVETRAIN

- Freightliner® XCM Modular Rail Rear Engine Diesel Chassis
- Cummins® L9 380 HP Diesel Engine with 1,150 lb-ft Torque¹ **NEW**
- 160-Amp Alternator
- Allison® 3000 MH 6-speed Automatic Transmission with Lock-up Torque Converter
- Aluminum Wheels
- Front and Rear 275/80R 22.5 Tires
- (2) 12-Volt Flooded Lead-Acid Chassis Batteries
- Hydraulic Leveling Jacks with Control Panel
- Freightliner® V-Series VFS I-beam Front Suspension
- Freightliner® V-Series V-Ride Rear Suspension
- Custom Tuned Sachs® Shock Absorbers
- Rear Radiator
- Front Disc Brakes and Rear Drum Brakes
- Full Air Brake System with Automatic Slack Adjusters
- Single Stage Variable Geometry Turbocharger (VGT) Engine Brake
- Manual Parking Brake
- Driver and Passenger Side Fuel Fill
- Tire Pressure Monitoring
- Adaptive Cruise Control
- Automatic Traction Control
- Collision Mitigation with Forward Warning and Active Braking
- Electronic Stability Control

¹ Peak horsepower achieved at 2,200 RPM. Peak torque achieved at 1,200 RPM. Cummins® B6.7 360 HP Diesel Engine is no longer available.

CONSTRUCTION

- Seamless One-piece Gel-coat Fiberglass Molded Roof Cap
- 5 1/4" Formed Roof Insulation
- Tubular Aluminum Roof Skeleton Frames
- Extraordinaire™ Ducted Air Cooling System
- One-piece Molded Gel-coat Fiberglass Front and Rear Caps
- Steel Cockpit Overhead Support Frame
- Crane® Composites Noble® Select All-Composite Exterior Sidewalls
- Tubular Aluminum Wall Skeleton Frames
- High-performance Thermal Insulation in Sidewalls
- Steel Floor Skeleton
- Engineered Wood Sub-flooring
- 1 1/2" Thick Thermal Insulation in Floor
- Steel Basement Construction
- Rust Protective Undercoating

CONSTRUCTION OPTIONS

		33 AA	37 BA	38 KA
Slide-out Mechanisms	Combination Hydraulic and Electric Slide-out Mechanisms ¹	S	-	-
	Hydraulic Slide-out Mechanisms	-	S	S

¹ The 33 AA's vanity slide features a electrically powered rack and pinion system.

ELECTRICAL

- Spyder Controls Multiplex System
- Firefly Integrations Mira Module¹
- Centralized 75" Spyder System Main Monitor
- Interior Entryway Spyder System Color Touchscreen
- Additional Spyder Color Touchscreens Throughout Coach
- 8.0-Kilowatt Onan® Quiet Diesel Generator
- Generator Slide Tray
- 2,000-Watt Pure Sine Wave Inverter Charger with Auto-Gen Start and Interior Remote Control²
- Battery Slide-out Tray
- 50-Amp Shore Power
- Auxiliary Solar Port
- HD Over-the-air Antenna
- Park Cable and Ground Satellite Hook-up
- Prep for In-motion Satellite
- Blu-ray™ Player
- Satellite Receiver³
- 12-Volt Breaker Panel
- 12-Volt Disconnect Switch
- Rotary Disconnect Switches for House Batteries, Chassis Batteries, and Inverter
- Ground Fault Circuit Interrupter (GFCI) Outlets at Galley, Lavatories, and Sewer Bay
- 110-Volt Exterior Receptacle
- Surge Guard® Transfer Switch
- USB Receptacles Throughout Coach

ELECTRICAL OPTIONS

		33 AA	37 BA	38 KA
Heating and Cooktop Power Source	Liquid Propane (LP) Coach ⁴	S	S	S
	Hydronic Heating & Electronic Appliance Equipped Coach ⁵ UPDATED	O	O	O
House Batteries	(6) 6-Volt, 230-Amp Hours Flooded Lead-Acid House Batteries	S	S	S
	(6) 6-Volt, 210-Amp Hours Extended Cycle AGM House Batteries	O	O	O
Air Conditioning	(2) 15,000-BTU Air Conditioners with Heat Pumps	S	S	S
	(2) 15,000-BTU Low Profile Air Conditioners with Heat Pumps and Condensation Drains	O	O	O
Space Heating	(1) 35,000-BTU and (1) 30,000-BTU Ducted Furnaces ⁶	D	-	-
	(1) 30,000-BTU and (1) 20,000-BTU Ducted Furnaces ⁶	-	D	-
	(2) 30,000-BTU Ducted Furnaces ⁶	-	-	D
	Aqua-Hot® 250D Heat Exchanger ⁷	D	D	D
Solar Panels	Prep for Solar Panels ⁸	O	O	O
	(1) 200-Watt Solar Panel with (1) 30-Amp Controller	O	O	O
	(3) 200-Watt Solar Panels with (1) 30-Amp Controller	O	O	O
In-motion Satellite Dish ⁹	O	O	O	
Prewiring for Winegard® Trav'ler™ Satellite ¹⁰	O	O	O	
Wi-Fi Booster	O	O	O	

¹ Download the accompanying Vegatouch app to control your coach locally within Bluetooth range.

² Automatic generator start capabilities controlled through Spyder Controls Multiplex System.

³ Requires subscription.

⁴ Propane is used to power the ducted furnaces, the water heater, and liquid propane cooktops.

⁵ Replaces the ducted furnaces, the Truma AquaGo™ water heater, and the liquid propane cooktop with an Aqua-Hot® heat exchanger and induction cooktops. Removes LPG tank. Formerly known as "All-Electric Coach".

⁶ Standard with LP coach option.

⁷ Replaces ducted furnaces when hydronic heating & electronic appliance equipped coach option is selected. Aqua-Hot® heat exchanger provides both heated air and water.

⁸ Includes docking ports for aftermarket solar panels.

⁹ High-definition programming is not available on a domed satellite antenna unless you subscribe to DISH Network®. In-motion satellite dish and prewiring for Winegard® Trav'ler™ satellite cannot be optioned together on the 33 AA.

¹⁰ In-motion satellite dish and prewiring for Winegard® Trav'ler™ satellite cannot be optioned together on the 33 AA.

Specifications, Features, and Options (Cont'd)

KEY : S : Standard Feature | O : Optional Feature; Additional costs may apply | D : Dependent; Availability is dependent on selection of another option | - : Not Available

PLUMBING

- Aqua View Showermiser™
- Water Filter
- Water Pump Switch Access from Spyder System and Sewer Bay Board
- Low-point Water Drain Lines
- Black Holding Tank Flush System
- Gravity Water Fill
- Heated Fresh and Holding Tank Compartment via Heat Duct
- Tank Level Monitor System
- Centralized Exterior Sewer Bay with Gravity Black and Grey Evacuation Ports
- Exterior Rinse Hose with Shower Head
- Sewer Bay Hand Sanitizer and Paper Towel Holders

ELECTRICAL OPTIONS		33 AA	37 BA	38 KA
Water Heater	Truma AquaGo™ Comfort Instant Water Heater ¹	D	D	D
	Aqua-Hot® 250D Heat Exchanger ²	D	D	D
Water Heater Bypass System ³		D	D	D

¹ Now controllable through the Truma control panel and the Spyder System control panels. Standard with LP coach option.

² Replaces Truma AquaGo™ Comfort instant water heater when all-electric coach option is selected. Aqua-Hot® heat exchanger provides both heated air and water.

³ Standard with LP coach option. Not necessary with all-electric coach option.

EXTERIOR

- Full-body Paint with (3) Layers of Clear Coat
- Single-colored Slide-out Endwalls
- High Performance Protective Film on Front Cap and Select Areas
- (1) Girard® Side-mounted Powered Patio Awning with Integrated LED Lighting
- Girard® Powered Door Awning with Integrated LED Lighting
- Girard® Slide-out Toppers
- Side-swinging Exterior Storage Doors with Gas Shocks
- Lockable Handles on Compartment Doors
- Motion-sensor Lights in Cargo Bay
- 120-Volt and 12-Volt Outlets Inside Cargo Bays
- Pass-through Basement Storage
- Charcoal Carpet Cargo Walls
- Fiberglass Reinforced Plastic Basement Floor
- Frameless, Single-Pane Windows
- Exterior Patio Light
- Daytime Running Lights
- Docking Lights
- Chrome Power Heated Side-View Mirrors with Integrated Cameras
- Exterior TV with Soundbar
- Fast Charge USB ports within Exterior TV Compartment
- Lightweight Entry Door with Integrated Screen
- Entry Door Grab Handle
- Deadbolt Front Entrance Lock
- Automatic Double Entry Step
- Front Door Entry System via Key Fob¹
- Mud Flaps
- Custom Rock Guard

EXTERIOR OPTIONS		33 AA	37 BA	38 KA
(1) Manual Storage Compartment Slide-out Tray ²		O	O	O
Lippert™ On-The-Go™ Telescoping Ladder ³		O	O	O

¹ Entry system does not include exterior Spyder keypad.

² Trays slide out on both sides of motorhome.

³ All units will ship with a Lippert™ On-The-Go™ Prepped Receiver installed.

INTERIOR

- Handcrafted Overhead Cabinetry
- Carpeted Step Well with Composite Steps
- Powered Step Well Cover
- Living Area TV
- Solid Surface Galley Countertop
- Treated Carpet in Slide-out Floors
- Handcrafted Slide-out Fascia
- Soft Touch Vinyl Ceiling
- Dimmable LED Lighting
- Prep for Washer and Dryer
- Carbon Monoxide Detector
- LPG Leak Detector
- Smoke Detector
- Fire Extinguisher
- Solar and Privacy Shades
- Soft-closing Drawers
- Powered Roof Vents
- Interior Grab Handle at Entry Door
- Egress Windows Throughout Coach

OPTIONS		33 AA	37 BA	38 KA
Interior Décor Packages	Stoney Creek	O	O	O
	Solstice NEW	O	O	O
Upholstery Fabrics	Ultrafabrics® Montage Landscape ¹ NEW	D	D	D
	Ultrafabrics® Montage Alpaca ² NEW	D	D	D
Cabinetry Stain	Shadow	O	O	O
	Sandstone NEW	O	O	O
	White Linen NEW	O	O	O
	Platinum NEW	O	O	O
Floor Tiles	Marble Obsess Glazed Porcelain Tile	S	S	S
Standalone Living Area Fireplace		O	-	O
Stacked Washer and Dryer		O	O	O
Gold Heat® Dual Zones Heated Tile Floor		O	O	O
Central Vacuum System		O	O	O

¹ Always paired with Stoney Creek Fabric Suite.

² Always paired with Solstice Fabric Suite.

DRIVER'S COMPARTMENT

- Ultrafabrics® Montage Power Driver and Passenger Seats
- Dual Driver And Passenger Seat Armrests
- Swivel Bases for Driver and Passenger Seats
- Adjustable Seatbelt Brackets
- Powered Passenger Seat Footrest
- Tilt and Telescoping Steering Wheel with Integrated Controls
- Adjustable Accelerator and Brake Pedals
- Wraparound Dash with Matte Gray Accents
- Mounted Dash Fans
- Cupholders on Driver and Passenger Side
- Digital Dash Cluster
- (1) Center Storage Drawer
- Generator Start & Stop Rocker Switch
- USB Dash Receptacles
- 12-Volt Dash Receptacle
- Backlit Dash Rocker Switches
- Passenger Console Controls for Map Light, Fan, and Step Well Cover
- Driver and Passenger Map Lights
- One-piece Panoramic Windshield
- Single-motor Intermittent Windshield Wipers
- Automatic LED Headlights
- Side-view Cameras¹
- Color Back-up Camera
- 7" High Definition LED Multichannel Monitor for Side-view and Back-up Cameras
- Stereo with AM & FM Radio, CD Player, and Satellite Radio²
- Ceiling Mounted Speakers
- Overhead Cabinetry with Wooden Panel Doors
- Auxiliary Start Switch
- Concealed Air Horn
- Manual Opening Driver Side Window
- Solid, Non-opening Passenger Side Window
- Powered Solar and Privacy Windshield Shade
- Manual Solar and Privacy Shades on Side Windows

DRIVER'S COMPARTMENT OPTIONS		33 AA	37 BA	38 KA
In-dash Navigation System		O	O	O
Front Overhead TV		O	O	O
Electric Front Overhead Drop-Down Bunk ³ NEW		O	O	O

¹ Integrated within side-view mirrors and activated by turn signals.

² Subscription required for satellite radio.

³ Mattress measures 72" x 30". Decreases overhead storage capacity. Maximum weight limit of drop-down bunk is 250 pounds. Now includes telescoping ladder.

Specifications, Features, and Options (Cont'd)

KEY : S : Standard Feature | O : Optional Feature; Additional costs may apply | D : Dependent; Availability is dependent on selection of another option | - : Not Available

DINETTE AND LIVING AREA OPTIONS		SLEEPS	SEATS	SEATBELTS	33 AA	37 BA	38 KA
Drivers Side Dinette	75" Booth Dinette-Sleeper ¹	1	4	2	-	S	-
	75" Dinette with Chairs ² UPDATED	-	2	-	-	O	-
	75" U-shaped Dinette	-	4	2	-	O	-
	72" Booth Dinette-Sleeper ³	1	4	2	-	-	S
	72" Dinette with Chairs ² UPDATED	-	2	-	-	-	O
	72" U-shaped Dinette	-	4	2	-	-	O
Drivers Side Furniture	85" Air Coil Sofa Bed with Recliner ⁴	2	4	3	S	-	-
	114" Super Sofa ⁵	2	3	3	O	-	-
	74" Air Coil Sofa Bed ⁶	1	3	3	-	S	-
	74" Theater Seating	-	2	2	-	O	-
	85" Air Coil Sofa Bed ⁴	2	3	3	-	-	S
83" Theater Seating	-	2	2	-	-	O	
Passenger Side Dinette	72" Booth Dinette-Sleeper ³	1	4	2	S	-	-
	72" Dinette Bar with Lift TV ⁷	-	2	-	O	-	-
	72" Dinette with Chairs ² UPDATED	-	2	-	O	-	-
72" U-shaped Dinette	-	4	2	O	-	-	
Passenger Side Furniture	64" DE Sofa Bed with Lift TV ⁸	1	2	2	-	S	-
Passenger Side Bunk Beds (28" x 70") ⁹ UPDATED	2	-	-	-	-	S	

¹ Piece of furniture converts to 72" x 45" sleeping area.

² Formerly known as "Dinette Computer Workstation". The printer bump-out was removed for more leg room. The keyboard and printer trays have been converted to a drawer and a fixed shelf to maximize storage. Includes (2) freestanding accent chairs and (2) wooden folding chairs.

³ Piece of furniture converts to 69" x 45" sleeping area.

⁴ Mattress measures 72" x 59" and includes internal pump.

⁵ Consists of a flip and fold sofa bed, a 37" single theater seat, and a center console. Flip and fold sofa bed converts to 70" x 59" sleeping area.

⁶ Mattress measures 72" x 52" and includes internal pump.

⁷ Includes (2) freestanding accent chairs and (2) wooden folding chairs.

⁸ Piece of furniture converts to 57" x 49" sleeping area.

⁹ Now includes tablet holders in bunk areas.

KITCHEN

- 1.7-Cubic Foot Smart Convection Microwave with Air Fry
- Galley Overhead Cabinets
- Full Tile Backsplash
- Double Bowl Kitchen Sink with Single Lever Faucet and Pull-down Sprayer
- Panoramic Galley Window
- Solid Surface Galley Countertop, Sink, and Cooktop Cover
- Task Lighting

KITCHEN OPTIONS		33 AA	37 BA	38 KA
Refrigerator	20-Cubic Foot Stainless Steel Residential Refrigerator with Top Freezer ¹	S	S	-
	23-Cubic Foot Stainless Steel Residential Refrigerator with French Doors and Bottom Freezer ¹	-	-	S
Cooking Appliances	Three-Burner Liquid Propane Cooktop ²	D (S)	D (S)	D (S)
	Oven Range with Liquid Propane Cooktop ³	D (O)	D (O)	D (O)
	Two-Burner Induction Cooktop ⁴	D	D	D
Drawer-style Dishwasher ⁵	O	O	O	
Extendable Countertops	Flip and Fold Countertop Extension	S	-	-
	Manual Release Expand-An-Island	-	S	S

¹ Refrigerator volume is approximated.

² Standard with LP coach option. Not available with hydronic heating & electronic appliance equipped coach option.

³ Option with LP coach option. Replaces three-burner liquid propane cooktop when selected. Not available with hydronic heating & electronic appliance equipped coach option. Cannot option dishwasher and oven with cooktop together.

⁴ Replaces three-burner liquid propane cooktop when hydronic heating & electronic appliance equipped coach option is selected.

⁵ Cannot option dishwasher and oven with cooktop together.

BEDROOM

- Under Bed Storage
- Handcrafted Privacy Door
- Centralized Entertainment Center ¹
- Bedside Windows
- LED Reading Lights
- Ceiling Fan
- Overhead Cabinets with Headboard
- Nightstand with Solid Surface Tops
- Laundry Hamper
- Bed Comforter with Throw Pillows
- Mounted Bedroom TV

BEDROOM OPTIONS		33 AA	37 BA	38 KA
Mattress	Memory Foam King Mattress (72" x 80")	S	S	S
	Memory Foam Queen Mattress (60" x 80")	-	O	O
Bedroom Storage	Floor-to-ceiling Closet Space	S	-	-
	Wardrobe with Drawers Underneath	-	S	S
Bedroom Egress Door		O	O	O

¹ Houses Blu-ray™ player, satellite receiver, and cable TV hook-up.

BATHROOM

- (1) Porcelain Master Bathroom Sink
- Shower Skylight
- Mirrored Medicine Cabinet
- Solid Surface Lavatory Top
- Shower LED Light with Sliding Cover
- Roof Vent Fan
- Handheld Shower Head with Slide Bar
- Towel and Toilet Paper Holders
- Base Cabinet

BATHROOM OPTIONS		33 AA	37 BA	38 KA
Number of Bathrooms	(1) Bathroom	S	-	-
	(1) Bathroom and (1) Half-bath ¹	-	S	S
Shower	One-Piece Molded Fiberglass Shower (34.5" x 34.5")	S	-	-
	One-Piece Molded Fiberglass Shower (28.5" x 40.5")	-	S	S
Toilet	(1) Gravity Flush Toilet	S	-	-
	(1) Gravity Flush Toilet and (1) Macerator Toilet	-	S	S

¹ All half-baths contain a toilet and a solid surface countertop with a single porcelain sink.

Because of progressive improvements and specifications, standard and optional equipment are subject to change without notice or obligation. For a complete and up-to-date list of available options and specifications, visit tiffinmotorhomes.com.

1

YEAR OR 12,000 MILES
LIMITED WARRANTY

5

YEARS OR 50,000 MILES
DELAMINATION
LIMITED WARRANTY

10

YEARS OR 50,000 MILES
CONSTRUCTION
LIMITED WARRANTY

1

YEAR COACH
ROADSIDE SERVICE

∞

ONGOING
CUSTOMER SUPPORT

FOR SALES CALL 256-356-8661 AND PARTS & SERVICE CALL 256-356-0261 OR VISIT TIFFINMOTORHOMES.COM

105 2ND ST NW RED BAY, AL 35582  



TIFFIN

MOTORHOMES

All trademarks and logos are owned or used under license by Tiffin Motor Homes, Inc. and include, but are not limited to: TIFFIN®, MANY ADVENTURES. ONE DREAM™, ALLEGRO®, ALLEGRO BREEZE®, ALLEGRO RED®, PHAETON®, ALLEGRO BUS®, ZEPHYR®, WAYFARER®, ROUGHING IT SMOOTHLY®, OPEN ROAD®, POWERGLIDE®, CAHABA®, BYWAY™, CONVOY™, BRONZE™, and associated logos and emblems. Unauthorized use of any trademark of Tiffin Motor Homes, Inc. is strictly prohibited.

© Copyright 2023 Tiffin Motor Homes, Inc.

For all information concerning the limited warranty provided by Tiffin, please refer to the full written limited warranty set forth on the Tiffin website or held by our authorized dealerships. Please note, some interior furnishings not included. Revised: 8/29/23

LaMESA REC VAN
LaMesaRV.com
800-496-8778